

**Venue**

All taught components of the programme are based at either The University of East London's Stratford campus, the Homerton University Hospital or Queen Mary University of London Anatomy Laboratory. All venues are located in the heart of London's East End.

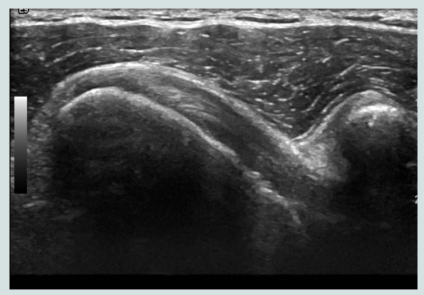
The University of East London's Stratford campus is close to the town centre of Stratford in East London and the 2012 Olympic Park. Following an extensive programme of refurbishment Stratford campus provides impressive facilities located in the heart of Stratford. Recent developments include a new Library and Learning Centre, laboratories and computing facilities, and the Centre for Clinical Education in Podiatry, Physiotherapy and Sports Science.

The Homerton University Hospital was the 2012 Olympic Hospital and is located close

**Address:**

University of East London  
Stratford Campus  
Water Lane  
London  
E15 4LZ.

Homerton University Hospital,  
Homerton Row,  
London,  
E9 6SR.



**For further information contact:**

Dr. Peter Resteghini,  
Course Director,  
Physiotherapy & Sports Medicine Department,  
Homerton University Hospital,  
Homerton Row,  
London, E9 6SR.

**Tel: 0208 510 5751**

**peter.resteghini@homerton.nhs.uk**



**Postgraduate Certificate  
Musculoskeletal Ultrasonography**

**A comprehensive training programme  
accredited at Master's level leading to a  
Postgraduate Certificate in  
Musculoskeletal Ultrasonography.**



**Homerton University  
Hospital Sports &  
Musculoskeletal  
Medicine Department**



**Accredited by The University of  
East London**

**CASE Accredited  
The Royal College of Radiologists  
RCR CPD Award 60 Credits**



**Accredited The Royal College of  
General Practitioners**



**Sponsored by BK  
medical**

## Programme Aims:

The Postgraduate Certificate (PGCert) in Musculoskeletal Ultrasonography has been developed at the Homerton University's Sport and Musculoskeletal Medicine Department and The University of East London School of Health, Sports and Bioscience. The programme objective is to support and formally recognize the professional development of those clinicians working in the field of Musculoskeletal and Sports Medicine and to facilitate competence in diagnostic and interventional ultrasonography.

The programme is targeted at Chiropractors, General Practitioners, Osteopaths, Physiotherapists, Podiatrists, Sonographers and Sports Medicine Doctors.

The programme is kindly supported by

**bk medical**

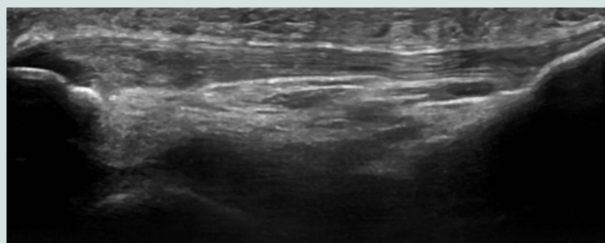
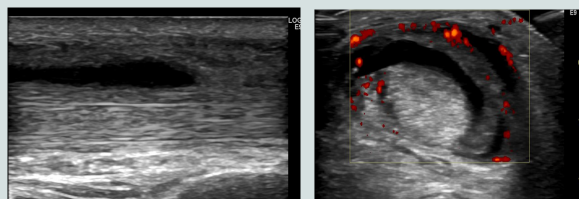


## Programme Structure:

The Postgraduate Certificate (PGCert) comprises two core 30 credit M-level modules. The first module can be completed independently but is a prerequisite to the second module.

The first module consists of lectures and practical sessions designed to equip the practitioner with a working knowledge of the instrumentation and practical application of musculoskeletal ultrasound.

The second module is designed to apply the skills and knowledge of the first module within an appropriately supervised clinical setting. Students must be able to demonstrate that they have organized suitable and appropriate work-based supervision prior to acceptance on module two.



## Programme Details:

### **Module 1** (30 credits)

This module requires attendance at the University. The module consists of two blocks each of 4 and 2 days. The first 4 days comprise a mixture of lectures and practical sessions. The second 2 days are an opportunity for practical scanning of normal anatomy.

### **Module 1: Assessment**

Students must sit a practical examination at the University. The examination requires the student to complete 2 ultrasound scans.

### **Module 2** (30 credits)

This module is predominantly a work-based unit designed to allow the student to apply and practice the new knowledge and skills gained from module 1. In addition module 2 includes 2 days of practical scanning at the University

### **Module 2: Assessment**

Students must submit a work-based portfolio of a minimum of 250 cases including a reflective review. Successful completion of programme Postgraduate Certificate Musculoskeletal Ultrasonography leads to the award of Postgraduate Certificate by the University of East London.

